



Burnsco Evening Series 2015 - 16

The Organising Authority is the Milford Cruising Club
24 Craig Road Milford, P.O. Box 31027, Milford
www.milfordcruising.co.nz

COMBINED NOTICE OF RACE & SAILING INSTRUCTIONS Open to members from any yacht club

1.0.1 RULES

- 1.1 The racing shall be governed by the “rules” as defined in the Racing Rules of Sailing 2013 – 2016 (RRS) and in conjunction with the Milford Cruising Club’s Racing and Local Rules. Where there is any conflict the Notice of Race and Sailing Instructions shall take precedence.
- 1.2 The Yachting New Zealand (YNZ) Safety Regulations Part II Category 5 shall apply for keel boats and multihulls.
- 1.3 The YNZ Safety Regulations Part V Category C shall apply for Trailer Boats and sports Boats.
- 1.4 Competitors shall abide by current harbour regulations. This rule is not open to protest by other boats.
- 1.5 Boats with lifting keels shall keep them in the locked down position and may not be moved whilst racing.
- 1.6 A boat shall not discharge trash into the water.
- 1.7 The corrected times shall be calculated on a boats predetermined handicap as allocated by the OA and are not open to protest.
- 1.8 The decision on boats eligibility to compete is predetermined by the OA and is not open to protest.

2.0 ADVERTISING

Boats may be required to display advertising as chosen and supplied by the OA

3.0 ELIGIBILITY AND ENTRY

- 3.1 The series is open to all keel boats, trailer boats and mult-i-hulls that meet the requirements of 1.1 – 1.3 above.
- 3.2 Eligible boats may enter by completing an entry form on line or at the MCC Members bar with the entry fee.
- 3.3 Entries close prior to the commencement of the race and must be received by the Starter or Race Secretary prior to the commencement of the race. Entry to a race is a declaration of compliance with the safety regulations (Rule 21).

4.0 FEES

Non refundable entry fees are as follows:

- Series Entry \$40.00 for 8 races (prepaid)
- MCC Members: \$10.00 per boat per race
- Other Clubs: \$15.00 per boat per race

5.0 SCHEDULE

8 Races Scheduled – 6 to Count

	EVENING SERIES	Six Races to Count – Two Drops	Tide	Height (m)	Start
1	Mon 12 th Oct 15	Evening	2009	3.0	1845
2	Mon 9 th Nov 15	Evening	1851	2.9	1800
3	Tues 24 th Nov 15	Evening	1844	3.3	1745
4	Fri 22 nd Jan 16	Evening	1903	3.1	1800
5	Mon 22 Feb 16	Evening	2031	3.1	1900
6	Mon 7 th Mar 16	Evening	1857	3.1	1745
7	Mon 21 st Mar 16	Evening	1918	3.0	1815
8	Wed 6 th Apr 16	Evening	1828	3.3	1730

6.0 FLAGS

Boats shall fly a yellow pennant.

7.0 MOTORS & AUTOPILOTS

7.1 Motors may be used to get clear before or after grounding and to avoid shipping so long as the yacht is not maneuvered in such circumstances to gain advantage to the next mark. The use of a motor must be reported to a member of the Sailing Committee as soon as possible

7.2 Autopilots may be used.

8.0 RACING AREA AND THE COURSES

The racing area shall be around the Auckland Harbour Racing Marks laid within the general vicinity of Milford, Rangitoto and Takapuna. The Race Courses are shown below and also contained in the MCC Year Book

9.0 THE START & PROCEDURE

9.1 Times shall be taken from sound or visual signals.

9.2 The starting procedure shall be in accordance with Rule 26. (5,4,1,0 sequence).

9.3 The MCC club starting line for shore based signals is from a conspicuous white flag pole located in the Milford Reserve 50 metres south of the Estuary and the Outer Distance Marker (ODM) which is a moored orange buoy. The inner distance mark is the Milford Estuary's most Eastern Beacon. Alternatively starts may be started on the water whereby the starting line shall be between the Start Boat and an ODM (Pin) or as advised by the Race Starter.

10.0 RECALLS

10.1 *Individual recall:* When at the starting signal any part of a yacht(s) is over the line, the starter shall make a sound signal and call up the yacht(s) on Ch 77. The responsibility for returning shall remain with the yacht(s) concerned who shall return to the course side of the line and restart.

10.2 *General recalls:* VHF 77 will be used to advise OCS starters. In the event the Starter is unable to identify all premature starters or where there has been an error in the starting procedure a General Recall will be made by making **two sound signals** and to call up all boats on Ch77. The previous Start Signal shall be the **5 minute** warning signal for the restart or as decided by the Starter on CH77

Note the use of Flags may or may not be used depending on number of volunteers onshore or the Committee Boat. Therefore unless otherwise advised competitors are advised to rely on VHF 77 and sound signals.

11.0 THE FINISH

The finishing line will be between the ODM and flag pole on shore (start line) or start boat on water or as advised on VHF 77. If there is no Race Finisher yachts shall take their own time and report it to a member of the Sailing Committee. After finishing any yacht re crossing the line in either direction will risk disqualification.

12.0 SCORING

The points system to be used will be the Low – Point Scoring System described in the RRS Appendix A. Scoring Rule A9 will apply.

8 races scheduled with six of a yachts best scores to count.

If six (6) races or fewer are completed a boats series score will be the total of her scores.

13.0 PENALTY SYSTEM

RRS Rule 44 Shall apply. Except that A 360⁰ penalty turn when a yacht breaks one or more rules of RRS Part 2 in an incident while racing. A 360⁰ turn for breaking RRS rule 31.

14.0 TIME LIMITS & SHORTENED COURSES

In the event of the first boat not rounding the first mark of the course within 90 minutes after the starting signal the race shall be abandoned. The Starter or Sailing Committee can shorten a course to a finish line at any mark.

15.0 PROTESTS AND REQUESTS FOR REDRESS.

Protesting yachts must fly Code Flag B (Red) to a regulation size. A protest shall be made in writing in accordance with ISAF Rules and presented to a member of the Sailing Committee within 2 hours of finishing. Protests will not be held after racing. Competitors involved in protests will be informed by phone email or fax of the time and date when the hearings will be held.

A fee of \$5.00 must accompany the protest. This is refunded if the protest is successful. A Protest Committee shall be appointed by the Sailing Committee and the protest heard at the earliest convenient time. Breaches of these Sailing Instructions Rule 6.0, the failure of yachts to display names or correct sail numbers for all sails will not be grounds for protest. Any penalties deemed necessary for these or other breaches of an administrative matter shall be at the Sole Discretion of the Sailing Committee.

16.0 HANDICAPS

The Time Correction Factor (TCF) allotted to each Yacht by the OA may be altered by the Handicapping Committee as they see fit. A boat elapsed time is multiplied by her TCF to give her Corrected Time.

17.0 SAFETY REGULATIONS

A boat that retires from a race shall notify the Starter or a member of the Sailing Committee as soon as possible on VHF Channel 77.

18.0 EQUIPMENT AND MEASUREMENT CHECKS

A boat or equipment maybe inspected at any time for compliance with these sailing instructions.

19.0 RADIO COMMUNICATION

A boat shall neither make radio transmissions while racing nor receive radio communications not available to all boats so far as it may give a boat information it can use to its advantage whilst racing. This restriction also applies to mobile phones. The use of VHF radio and mobile phones is otherwise permitted as it relates to a boats individual organisation.

All radio communications between competitors, the Starter, Finisher and the Sailing Committee shall be through VHF Channel 77.

20.0 RESULTS & PRIZES

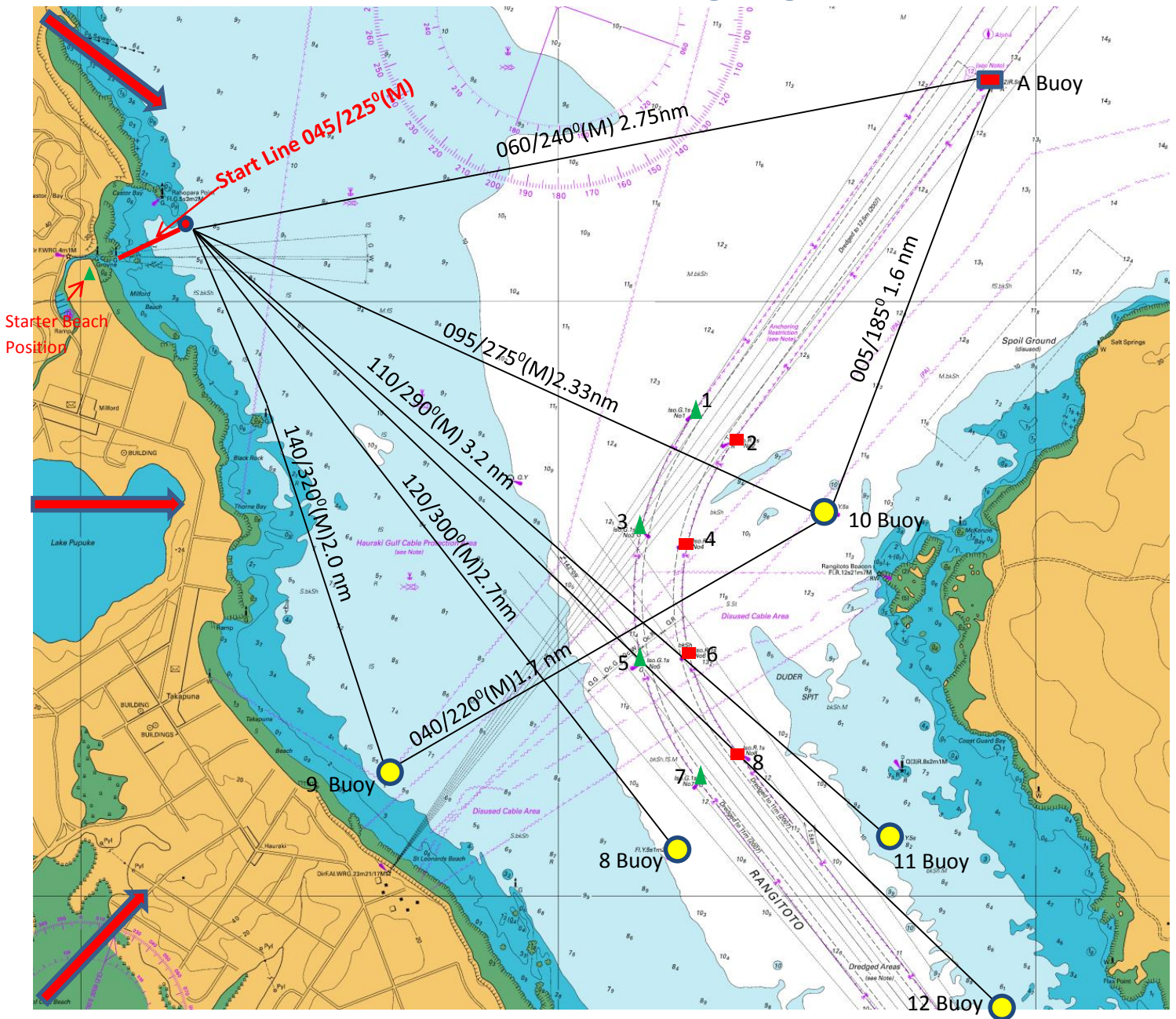
Results and prizes will be awarded at the Milford Cruising Club including participation prize(s). Prize giving shall be on the Club Night on the immediate following Thursday at approximately 1830 hours. All crews are encouraged to attend. A representative from each boat must be present to be eligible for both Race Night and Participation Prizes. For Race 3, Race 6 and Race 8 the Prize Giving may be held at the Club after the Race and will be notified to competitors.

21.0 Disclaimer of Liability

All those taking part in a Milford Cruising Club races or any other sailing events controlled by the MCC, as between the MCC and each of those so taking part, do so at their own risk and responsibility and the MCC and any sponsor has no liability for any damage, loss or penalty suffered by any boat crew or any other person taking part in such events. The MCC is not responsible for the sea – worthiness of the boats in the event and /or the sufficiency and / or adequacy of their equipment or the competence of the skippers or crews whose entries are accepted. The MCC reserves the right in its sole and uncontrolled discretion to refuse any entry.

As all owners are aware competitive racing inevitably carries with it an increased risk of collision between boats and resultant damage and expense. The MCC Sailing / Organising Committee (MCC) urges all owners to carry full racing insurance and believes that at the very least third party insurance should be held. It is not, however the responsibility of the MCC to police or enforce insurance; it is a matter of choice for individual owners and skippers. The MCC shall not be responsible for losses arising during the Race Series (insured or otherwise). All owners and skippers are advised that it is the responsibility of owners and / or skippers to ensure they carry the relevant insurance. Boats race at their own risk.

MCC Tidal Courses – All Bearings Magnetic



No.	Northerly Wind Direction	No.	South Easterly Wind Direction
1	Start, 8 (port), A (port) to finish. Dist. 8.0 nm	6	Start, A Buoy (stbd), 1 Channel Buoy (Stbd), A (port), to finish. Dist. 8.0 nm
1a	Start, 8 (port), 10 (port) to finish. Dist. 6.0 nm	6a	Start, A (stbd), 1 Channel Buoy (stbd), to finish. Dist 6.0 nm
	North West Wind Direction		Easterly Wind Direction
2	Start, 9 (port), 12 (port) to finish. Dist. 8.5nm		
2a	Start, 8 (port), 11 (port) to finish. Dist. 6.0nm	7	Start, 10 (stbd), 9 (port), 8 (port) to finish. Dist. 8.0 nm
	Westerly Wind Direction	7a	Start, 10 (stbd), 9 (stbd) to finish. Dist. 6.0 nm
3	Start, 10 (stbd), 9 (stbd), 10 (port) to finish. Dist 8.0nm		
3a	Start, 9 (port), 10 (port), to finish. Dist 6.0 nm		North Easterly Wind Direction
	South Westerly Wind Direction		
4	Start, A Buoy (stbd), 9 (stbd) to finish. Dist. 8.0nm	8	Start, 9 (port), 10 (port), 9 (port), 10(port) to finish. Distance 8.5 nm.
4a	Start, 10 (stbd), 9 (stbd) to finish. Dist. 6.0nm	8a	Start, 9 (port), 10 (port), to finish. Dist 6.0 nm
	Southerly Wind Direction		
5	Start, A Buoy (stbd), 8 (stbd) to finish. Dist. 7.0nm	9	Any other course decided by Sailing Committee / OOD
5a	Start, 10 (stbd), 8 (stbd) to finish. Dist 6.0nm		