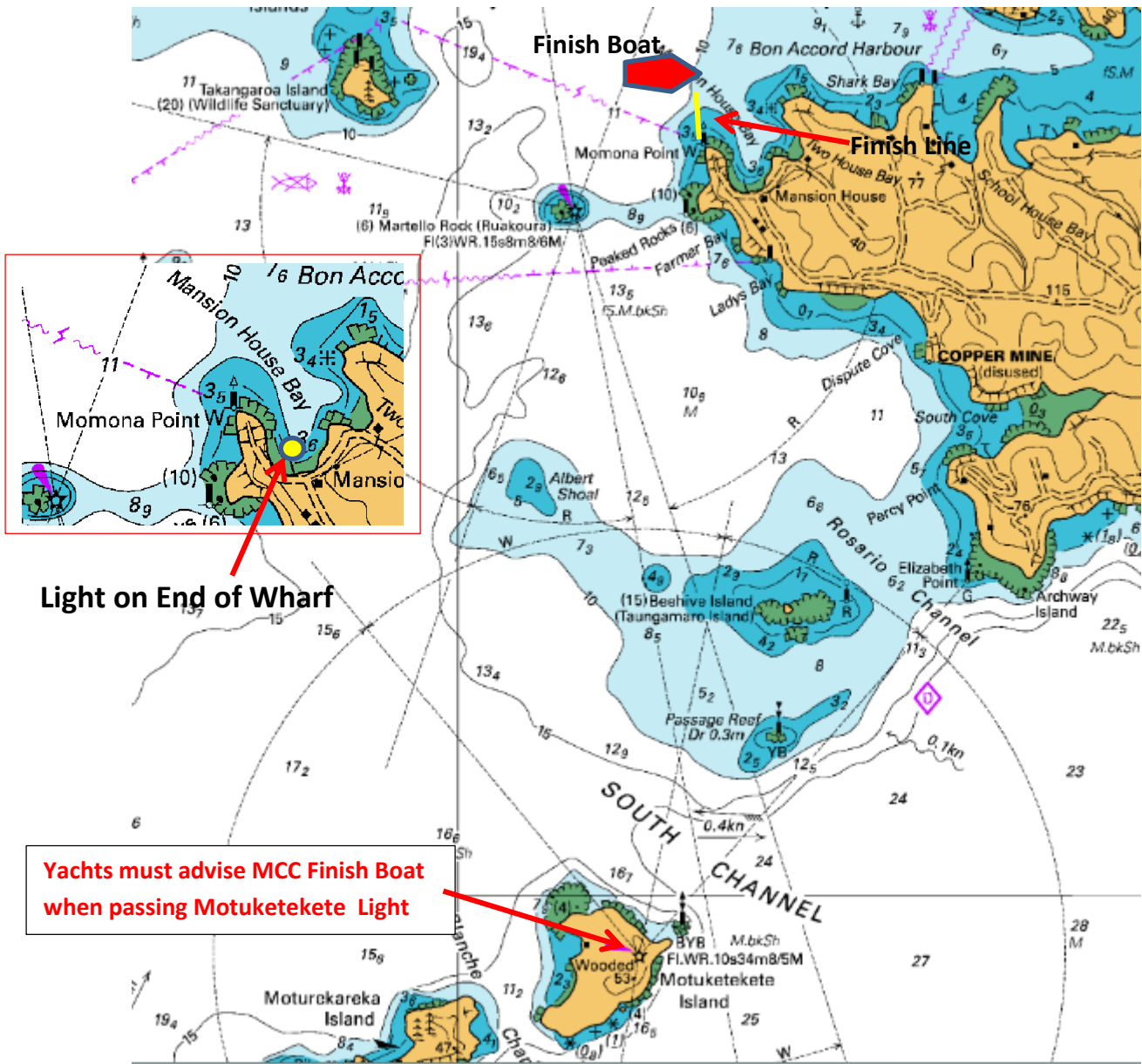


KAWAU NIGHT RACE

Note: All boats must change to Channel 03 when through Tiri Channel and advise OOD of current position.

Yachts must advise MCC Finish Boat when passing Motuketekete Light



COURSE

Both Divisions:

Race starts in a northerly direction from the club starting line and proceed through Tiri Passage, leaving outer Yellow Buoy (Port) and finish between MCC Finish Boat (Port) and Momona Point, Kawau Island.

Finish Boat in approximate position 200 meters – 300 metres north of Momona Point.

If no Finish Boat on station yachts take their own time when they sight the bright **wharf light** at the end of **Mansion House Wharf** in transit with left hand edge Momona Point.