

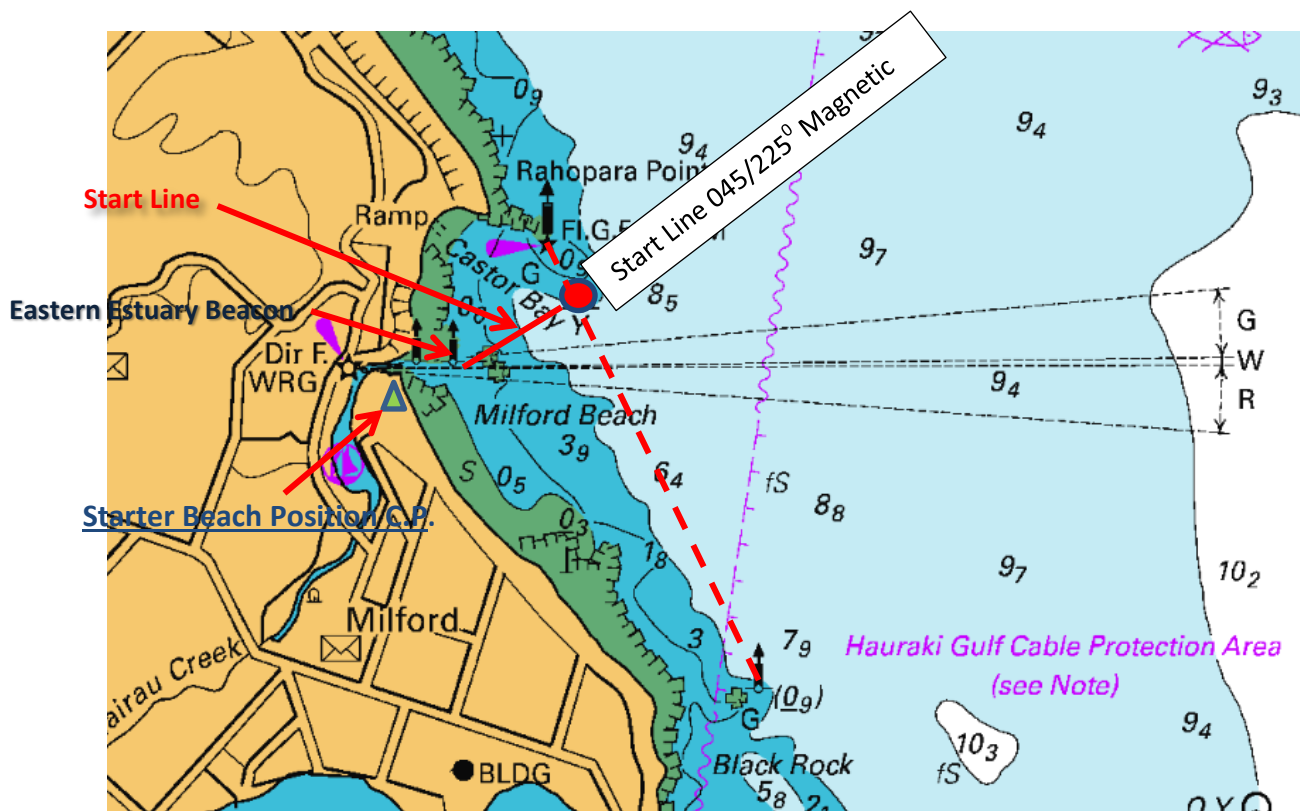
# Starter Position - Milford Beach and Start Sequence

## 1. Onshore Position

The onshore starter should stand or place his vehicle (if key access is obtained) next to the Conspicuous Pole (CP) on the Milford Reserve. The start line is a transit between the CP and the Outer Distance Mark (ODM) - a moored buoy.

*Note Yachts must keep to the east of the Estuary Eastern Beacon when starting - and general navigational safety!*

**If the ODM is missing**, then the start line is a transit between the Estuary Eastern Beacon and the CP. The ODM is taken as the intersection of this transit and a line between the Castor Bay Reef Mark Beacon and the Black Rock Mark.



## 2. The Start Sequence (5,4,1,Go). Starter uses a horn over VHF radio Ch 77

1. A blast at **5 minutes** prior to the Start
2. A blast at **4 minutes** prior to the Start
3. A blast at **1 minute** prior to the Start
4. A blast at the **Start**.

### Start Infringements:

#### Single Yacht over the line

If a single yacht is over the start line at the Start sound a single blast and announce over the VHF the name of the yacht. This yacht must return to and re-cross the start line before proceeding with the race.

#### General Recall

If more than one yacht is over the start line sound a "general recall" (a series of blasts on the horn) and announce "General Recall" over the radio. In the event of a "general recall" the Start time is used as the 5 minutes prior to the Start of the restarted race.