

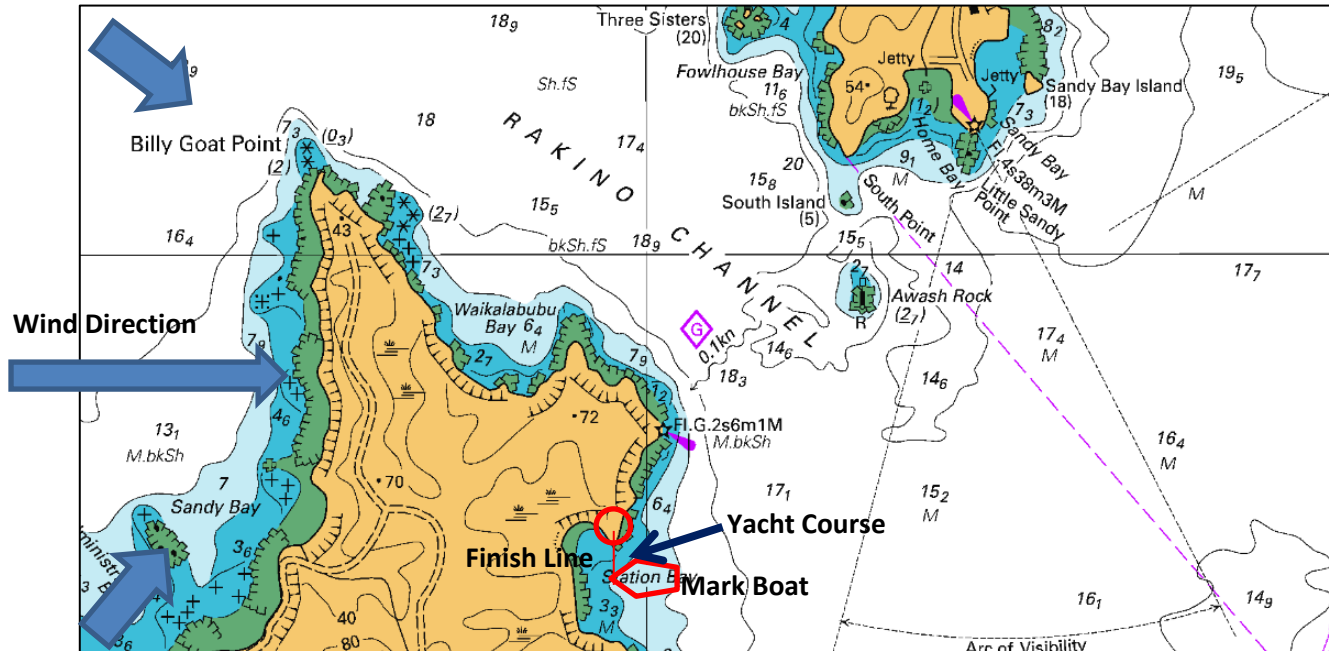
Mark Boat Position: Station Bay/Woody Bay Race



1.0 Finish at Station Bay, Motutapu Island

Yachts finish in a westerly direction between MCC Mark Boat (Port) and Station Bay, Motutapu Island. If safe to do so; Mark Boat to anchor position approximately 1 cable (200m) south of point circled in red.

Mark Boat approximate position: 36°44'.85"S 174°55'.90"E. Depth by Chart: 5m (approx)



2.0 Finish at Rakino Island – Rakino Race

Yachts finish in an northerly direction - between MCC Mark Boat (Port) and “Three Sisters” circled in red. If safe to do so; Mark Boat to anchor in position approximately 1 cable (200m) west of “Three Sisters”.

