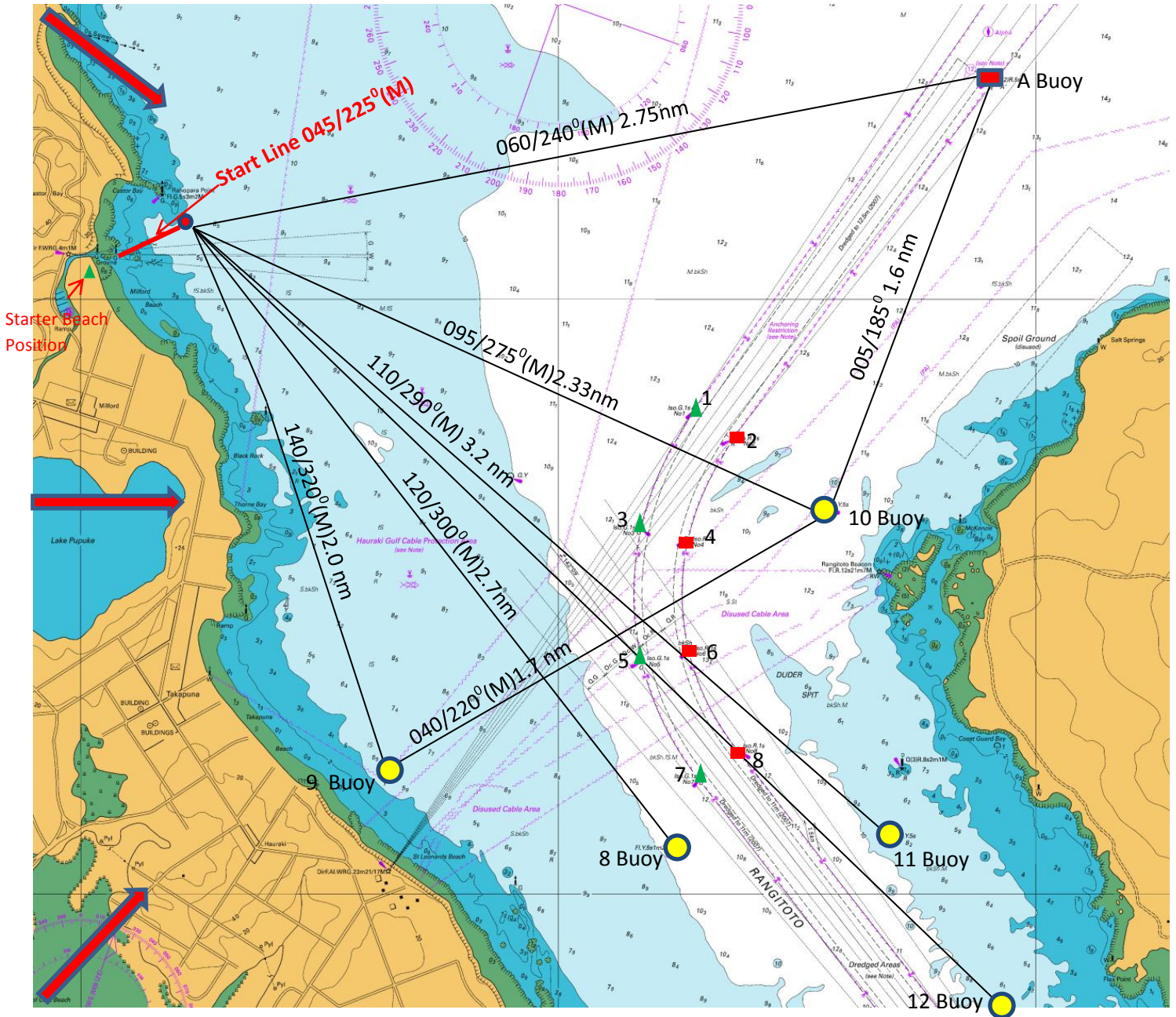


## MCC Tidal Courses - All Bearings Magnetic



No.	Northerly Wind Direction	No.	South Easterly Wind Direction
1	Start, 8 (port), A (port) to finish. Dist. 8.0 nm	6	Start, A Buoy (stbd), 1 Channel Buoy (Stbd), A (port), to finish. Dist. 8.0 nm
1a	Start, 8 (port), 10 (port) to finish. Dist. 6.0 nm	6a	Start, A (stbd), 1 Channel Buoy (stbd), to finish. Dist 6.0 nm
	<b>North West Wind Direction</b>		<b>Easterly Wind Direction</b>
2	Start, 9 (port), 12 (port) to finish. Dist. 8.5nm	7	Start, 10 (stbd), 9 (port), 8 (port) to finish. Dist. 8.0 nm
2a	Start, 8 (port), 11 (port) to finish. Dist. 6.0nm	7a	Start, 10 (stbd), 9 (stbd) to finish. Dist. 6.0 nm
	<b>Westerly Wind Direction</b>		<b>North Easterly Wind Direction</b>
3	Start, 10 (stbd), 9 (stbd), 10 (port) to finish. Dist 8.0nm		
3a	Start, 9 (port), 10 (port), to finish. Dist 6.0 nm		
	<b>South Westerly Wind Direction</b>		
4	Start, A Buoy (stbd), 9 (stbd) to finish. Dist. 8.0nm	8	Start, 9 (port), 10 (port), 9 (port), 10(port) to finish. Distance 8.5 nm.
4a	Start, 10 (stbd), 9 (stbd) to finish. Dist. 6.0nm	8a	Start, 9 (port), 10 (port), to finish. Dist 6.0 nm
	<b>Southerly Wind Direction</b>		
5	Start, A Buoy (stbd), 8 (stbd) to finish. Dist. 7.0nm	9	Any other course decided by Sailing Committee / OOD
5a	Start, 10 (stbd), 8 (stbd) to finish. Dist 6.0nm		